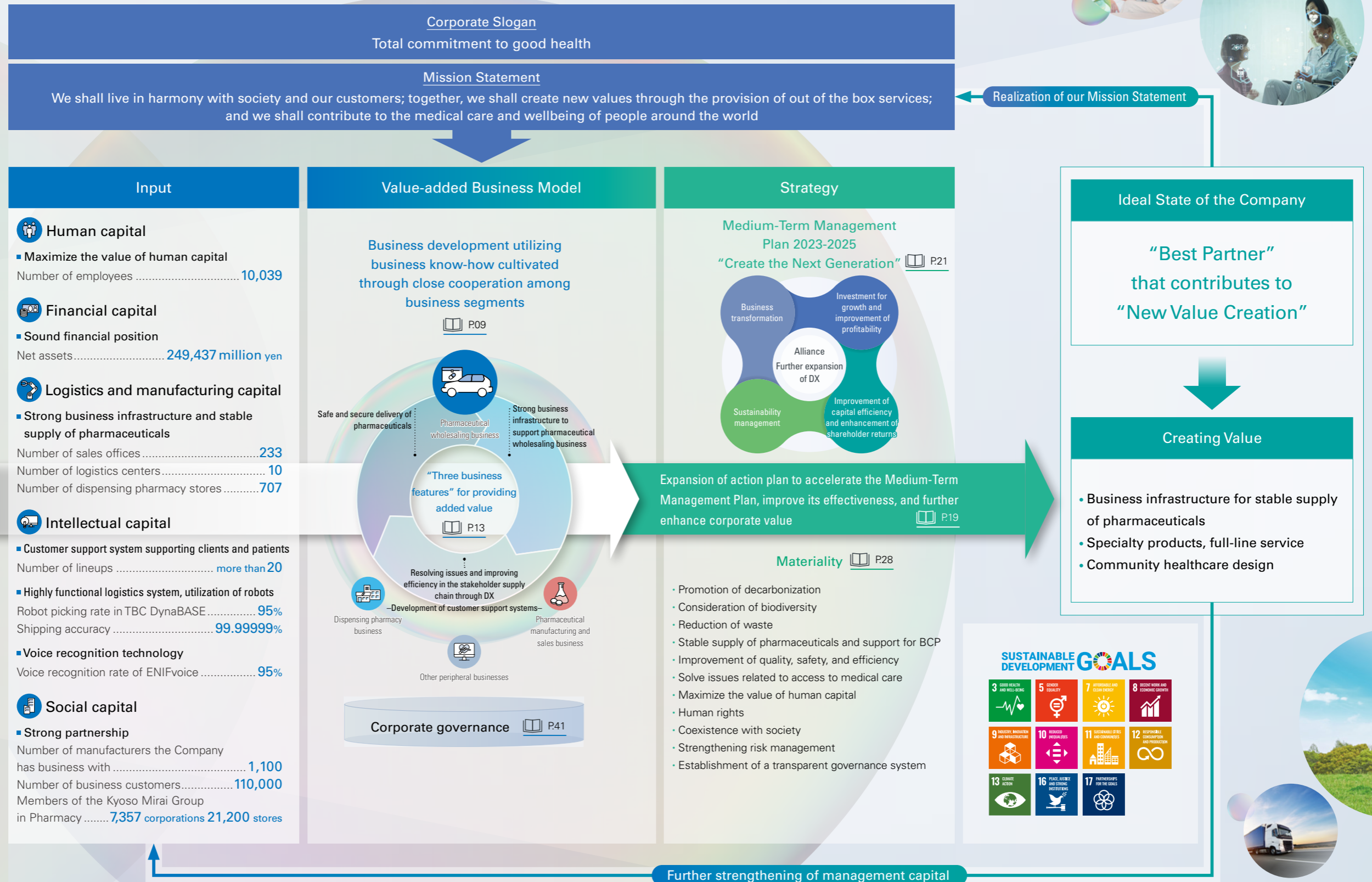


# Value Creation Process

TOHO HOLDINGS conducts business activities based on the corporate slogan "Total commitment to good health."

By using our group's unique management resources as a source of value creation to contribute to the health and medical care of people around the world, we aim to increase our corporate value and establish our corporate brand over the medium to long term through sustainable growth.



Further strengthening of management capital

**SUSTAINABLE DEVELOPMENT GOALS**

**External Environment**

- Declining birthrate and aging population over the medium to long term
- Diversification of modalities
- Progress in community-based integrated care system
- Environmental changes related to logistics
- Continued global inflation trend

VALUE CREATION

